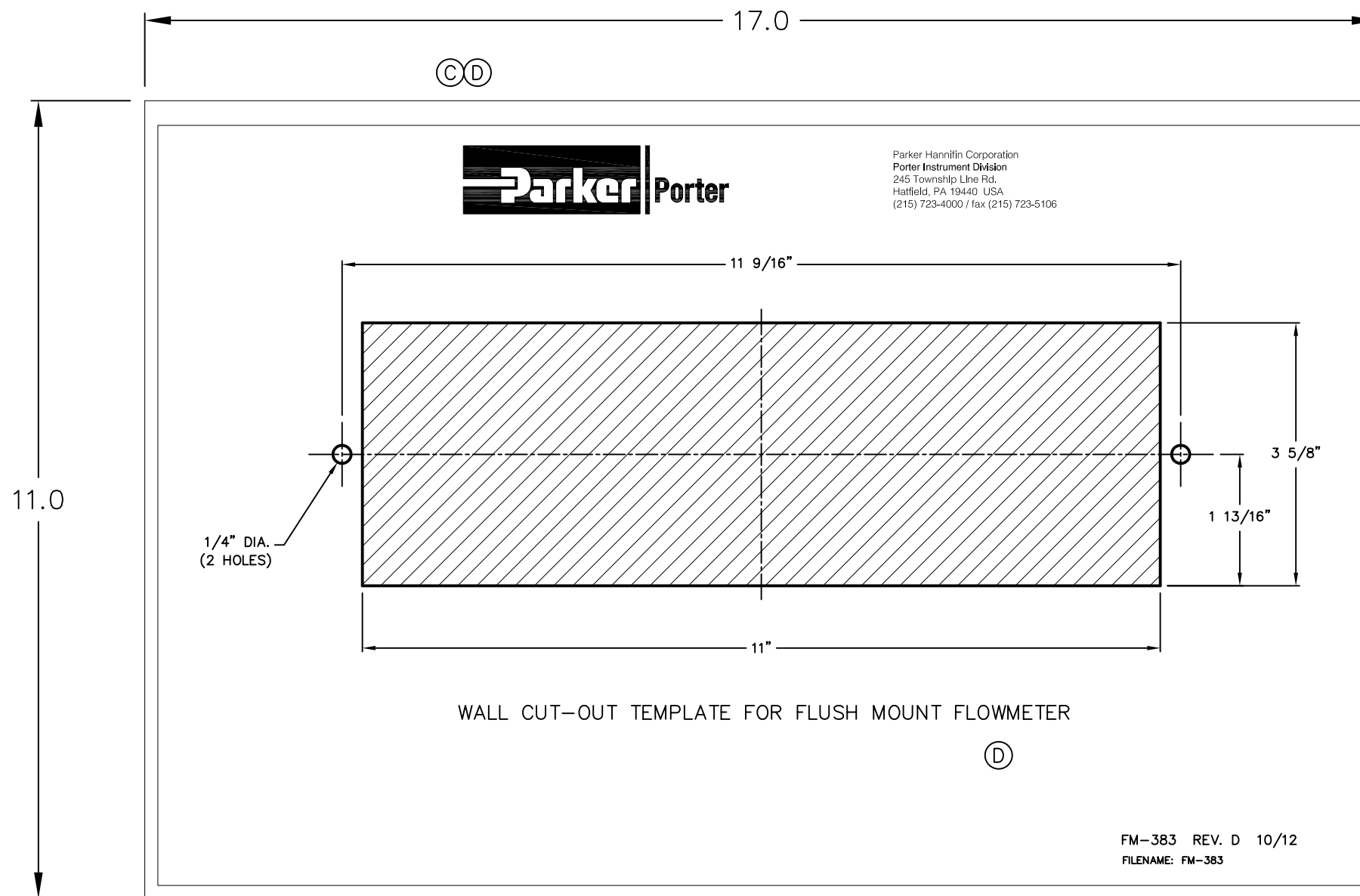


PROPRIETARY NOTICE

THIS DOCUMENT AND THE DATA DISCLOSED HEREIN IS NOT TO BE REPRODUCED, USED OR DISCLOSED WHOLE OR IN PART TO ANYONE WITHOUT THE PERMISSION OF PORTER INSTRUMENT DIVISION, PARKER HANNIFIN CORPORATION.



NOTES:

- © 1. PORTER TO SUPPLY CAMERA READY ARTWORK.

| REV | EC NO. | DESCRIPTION | NAME | DATE | APPVD |
|-----|---------|--|----------|---------------|---------|
| D | | UPDATED LOGO AND ADDRESS, CHANGED DENTAL METERS TO FLOWMETER | ANB | OCT. 11, 2012 | |
| C | 06-0308 | UPDATED PORTER LOGO. ADDED NOTE 1. | M.MALLOY | JUN. 7, 2006 | WHK TGT |

REVISIONS

TOLERANCE SPECIFICATIONS UNLESS OTHERWISE NOTED:

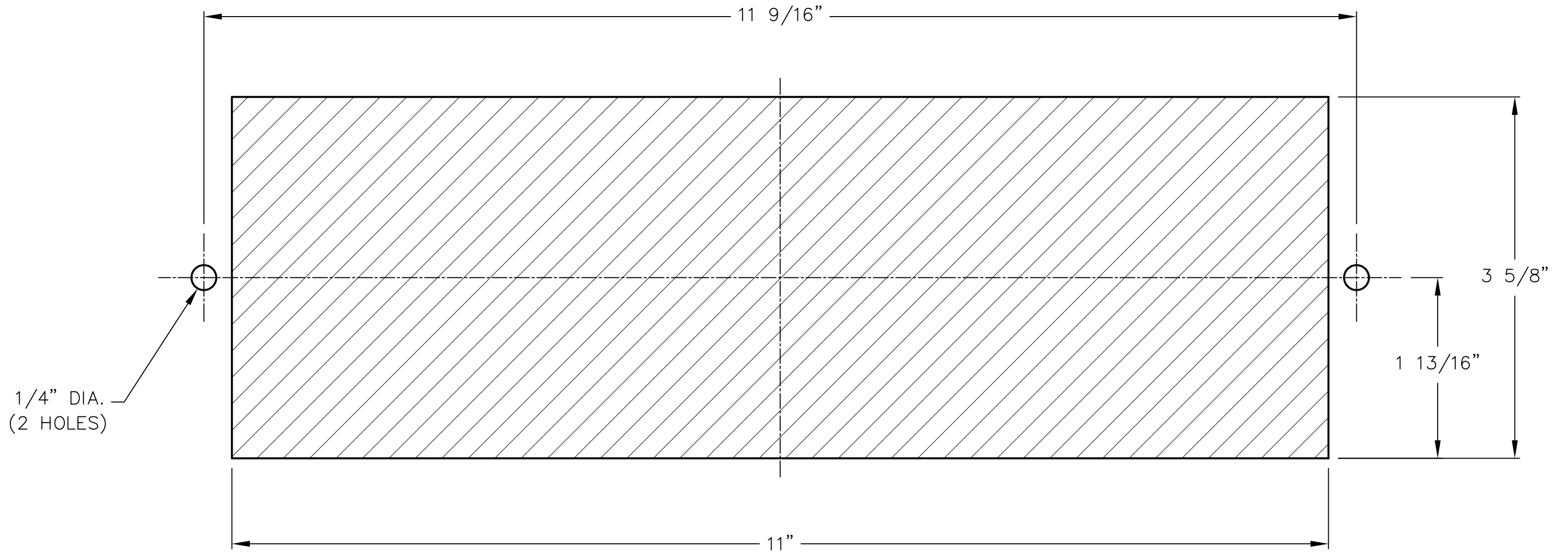
- DECIMAL .XXX±.005
- DECIMAL .XX±.02
- ANGLES±2°
- ALL DIA CONCENTRIC WITHIN .005 T.I.R.
- 63 RMS FINISH ALL SURFACES
- BREAK ALL CORNERS $\frac{.005}{.025} \times 45^\circ$
- ALL INSIDE CORNERS $\frac{.005}{.025} \times R$
- REMOVE ALL BURRS & SHARP EDGES

TEMPLATE FLUSH MOUNT METERS

| DATE | FILENAME: | NUMBER | REV |
|-----------------|-----------|-----------|-----|
| JUN. 7, 2006 | FM-383 | FM-383 | D |
| DR. M.MALLOY | | | |
| CH. W.KENNY | | | |
| APP. T.TRIMBOLI | SCALE 1=2 | SH 1 OF 1 | |



Parker Hannifin Corporation
Porter Instrument Division
245 Township Line Rd.
Hatfield, PA 19440 USA
(215) 723-4000 / fax (215) 723-5106



WALL CUT-OUT TEMPLATE FOR FLUSH MOUNT FLOWMETER